

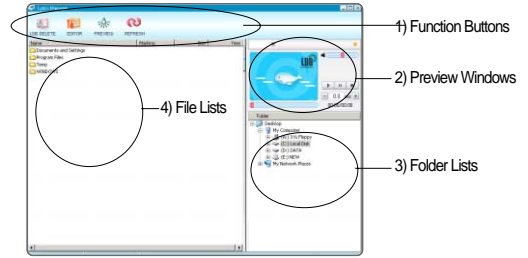
# Lyrics Manager

## User's Manual

### Names and Functions of Each Part

1

#### Names and Functions of Each Part



#### 1) Function Buttons



This button removes lyrics from the music files having lyrics.



This button enables you to input lyrics to the music file selected from the file list.

### Names and Functions of Each Part

2



This button shows lyrics on the LCD screen when playing music files from the manager.



This button renews a file list.

#### 2) Preview Window

This shows the lyrics by playing the file with lyrics marked.

#### 3) Folder List

This shows a folder list.

#### 4) File List

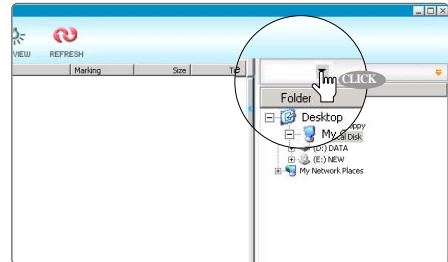
This shows music files in a folder selected from the folder list.

### Lyrics Marking

3

1. Run the "Lyrics Manager"  icon on the Desktop.

2. Select the model before you mark the lyrics.

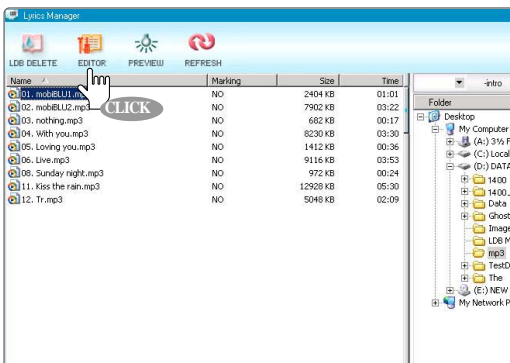


### Lyrics Marking

4

3. Find a folder that has music files from the folder list.

4. Select the files you want to mark, and click [EDITOR] button.



### Lyrics Marking

5

5. Either input the lyrics on the pop-up screen directly or import the LRC files by clicking the [IMPORT] button. Once the input is finished, click [OK].



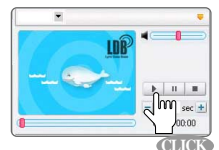
#### Reference!!

What is an LRC file?

This file includes Time table information and Lyric information.



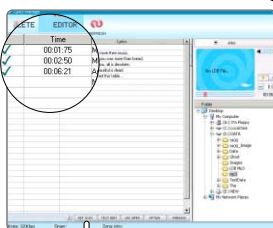
6. Play the music file by clicking the [Play] button on the preview screen.



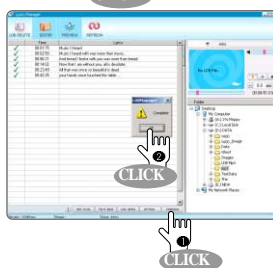
## Lyrics Marking

6

7. Set up the time by pressing the space bar on the keyboard or clicking the [SET SYNC] button.



8. When the SYNC Setting is completed, click the "Marking" button to finish it.



## Lyrics Marking

7

9. After the lyrics marking is completed, the music files will be displayed as "Marking" on the item [Lyrics Marking] from the file list.



10. Download the completed files that are marked, play the files, and the lyrics will be displayed on the LCD screen.



### Reference!!

- ◆ Lyric Display setting [Menu -> Setting -> LDB -> ON]
- ◆ MP3 with VBR encoding can occur mismatch of playing time due to file's characteristic

### "LOVE LETTER"

Send music letter to your lover and friends with lyric function.  
Receiver can read your letter with Music file.

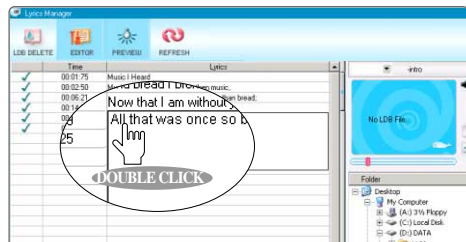
## Modifying Lyrics and Time

8

### Modifying Lyrics and Time

This function modifies the time and lyrics of the files that are marked.

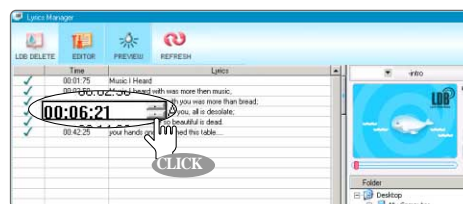
1. Select the music files from the file list and click the [EDITOR] button.
2. Double-click the part of the lyrics that needs to be modified, and adjust the corrections.



## Modifying Lyrics and Time

9

3. Select one of the listed time to modify, and click the time again to modify it.



### Reference!!

Setting the time of the interval to modify.

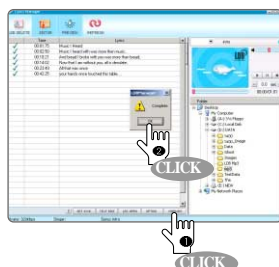
Click "Option" on the Editor window and enter the time that you want on the "Sync +, - interval." (Unit: milliseconds - 50 = 0.5 second)



## Modifying Lyrics and Time

10

4. After the modification is completed, click the "Marking" button and finish the marking.



### Modifying Entire Time

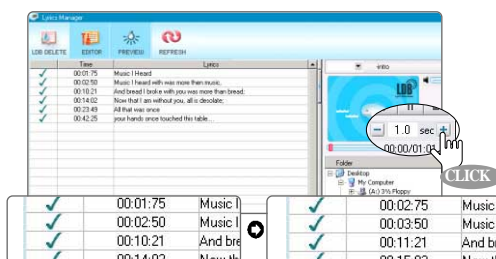
You can adjust the entire time of the lyrics both backward and forward with a regular interval.

1. Select music files from the file list and click [EDITOR].

## Modifying Lyrics and Time

11

2. Enter a time interval you want from the Preview window and modify it with [-, +] button.



3. When finished, click the [Marking] button to finish the job.

